

NEW SKATEPARK
ECONOMIC & INTERNAL AFFAIRS SCRUTINY PANEL
UPDATE REPORT

Date: 9th December 2020
Prepared by: [REDACTED]

Public Annual Progress Update (as entered into Perform)

The project includes the construction of a new main facility, improved island wide facilities and decommissioning of the existing facility.

The project has been progressed by procuring the design and planning team and preparation of draft planning application documents, supporting impact assessments and a concept design for the Les Quennevais Sports Centre site.

It was planned to complete the design of the facility and make a planning application before the end of the year. This was delayed by the redeployment of staff, travel restrictions on off island specialists and postponement of impact assessments due to COVID-19. The project has also been impacted by the resignation of the political lead and the reopening the preferred site debate by key stakeholders.

A feasibility study has been undertaken on an alternative site and the aim is to finalise this decision early in 2021 and make a planning application thereafter. Construction of the main facility is still planned for 2021.

Programme

Task	Complete by
Alternative Site Feasibility Study	18 th December 2020
Preferred Site Stakeholder Consultation	22 nd January 2021
Preferred Site Announced	29 th January 2021
Concept Design Alterations	26 th February 2021
Planning Application Submission	26 th February 2021
Construction Start	7 th June 2021
Construction Complete	26 th November 2021

It was originally planned to complete the design of the facility and make a planning application before the end of the year. This was delayed by the redeployment of staff, travel restrictions on off island specialists and postponement of impact assessments due to COVID-19. The project has also been impacted by the resignation of the political lead and the reopening the preferred site debate by key stakeholders.

Alternative Site

Les Quennevais Sports Centre was announced as the preferred site following a public consultation in July 2019. This was challenged by Jersey Sport due to concerns that the skatepark would not be coordinated with long term plans for redevelopment of Les Quennevais Sports Centre. This was the catalyst for a review of possible sites and the decision to undertake a detailed feasibility study, including site specific investigation, on an alternative site. Detailed site investigation was not possible at the time of the original site review due to budget constraints and so this was completed as a desk study only.

The alternative site under consideration is in the area known as South Hill Gardens (Figure 1) and the feasibility study is programmed for completion by the end of the year. The feasibility study will include a concept design and make a recommendation on whether or not South Hill Gardens is a viable site. The final decision on where to site the new skatepark will be made in consultation with stakeholders.

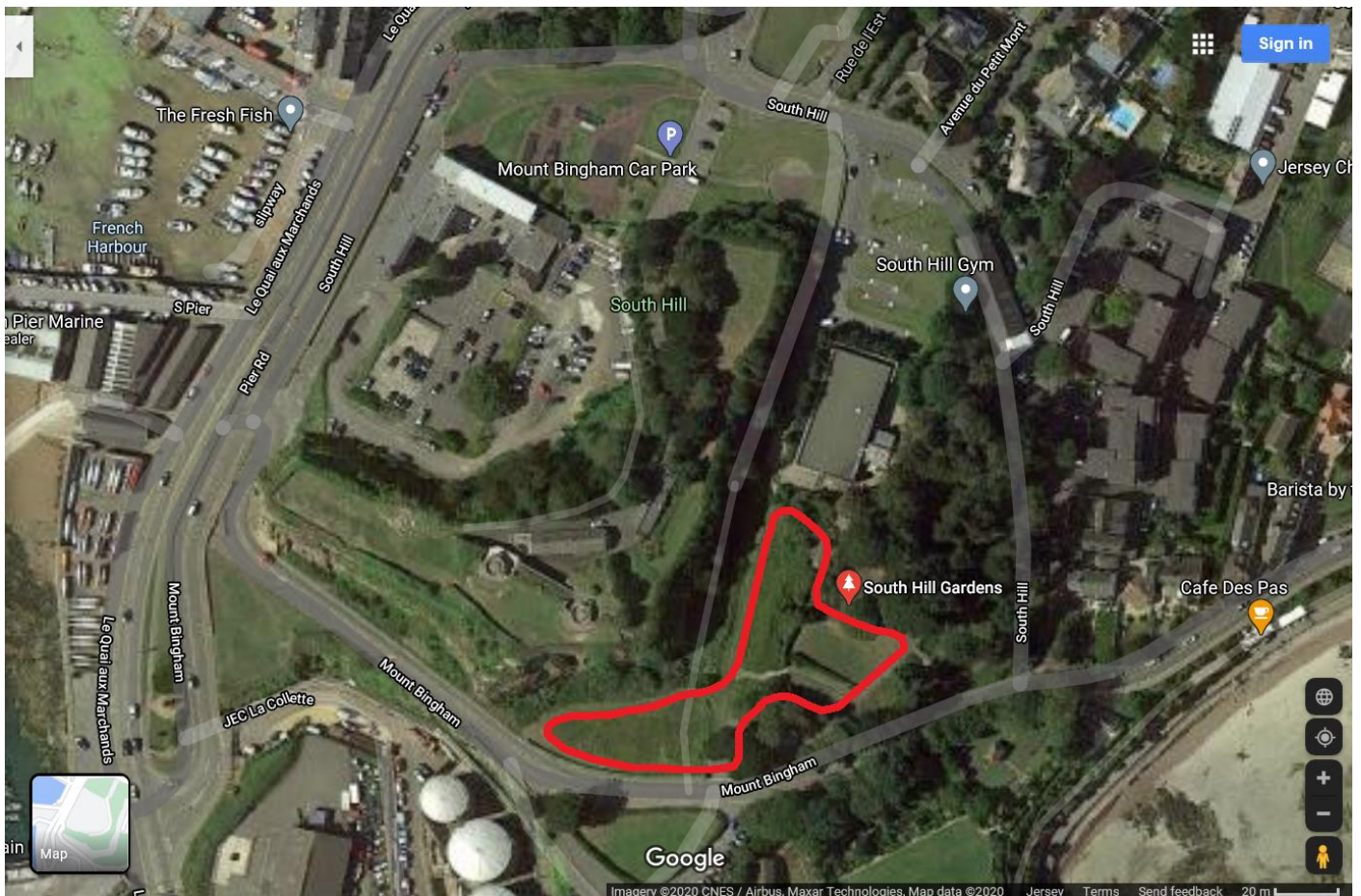


Figure 1 – Alternative Site – South Hill Gardens

Design Consultation

Concept designs have been based on consultation with children, young people and the skatepark community undertaken as part of the Social Case Report published at the end of 2018. The Jersey Skateparks Association have also had input and been consulted with throughout the development of the concept design for Les Quennevais Sports Centre. We have an excellent relationship with the Jersey Skateparks Association and consult with them regularly by email and through meetings.

Once the preferred site decision is finalised and a concept design adopted, there will be further opportunity for the wider skatepark community to be involved in the design of the facility. They will be consulted on the detail and be able to shape the new facility, ensuring it has all the features and obstacles to meet their needs and requirements.

Financial

Summary

Head of Expenditure:	N00GP20015 New Skatepark
Business Unit:	ERYC35
Cost Estimate:	£1,285,000

Funding Plan

Source	Year		Total
	2020	2021	
Government Plan	£100,000	£685,000	£785,000
Jersey Development Company	-	£425,000	£425,000
Ports of Jersey	-	£75,000	£75,000
Total =	£100,000	£1,185,000	£1,285,000

Risks

Description	Classification			Mitigation
	Probability	Severity	Rating	
Dissatisfaction of users and local skate community	2	4	8	Engage and consult with users during the design process
Objection to the planning application	3	3	9	Consult with key stakeholders during preparation of planning application Include key impact assessments in the planning application
Withdrawal of Government Plan funding	1	4	4	Update and submit business case as required
Withdrawal of Jersey Development Company and Ports of Jersey funding	1	4	4	Reconfirm funding with third parties in writing
Loss of political champion	3	4	12	Brief newly appointed Assistant Minister for EDTSC with delegated authority for Sport and obtain support
Uncertainty over chosen site	4	4	16	Complete site review, political briefing and stakeholder consultation and agree preferred site
Reduced capacity of Planning & Building Services	3	3	9	Submit planning application as soon as possible Continue liaison with Planning & Building Services to keep them aware of plans
Travel restrictions for specialist construction contractors due to COVID-19	2	4	8	Maximise works that can be undertaken by local contractors